

Worksoft & Experitest: Mobile Testing for Packaged Business Process Applications

August 15, 2018



WORKSOFT®

Before we start...



Worksoft & Experitest: Mobile Testing for Packaged Business Process Applications

August 15, 2018



WORKSOFT®

Erik Leaseburg
Worksoft Senior
Solution Architect



Guy Arieli
Experitest CTO





Agenda

- Perspective
- Intro to Experitest
- Solution Overview
- Demo
- Summary

Worksoft Insurance for Your Assurance Team

Agile Automation for End-to-End Business Process Discovery, Documentation and Testing

Global

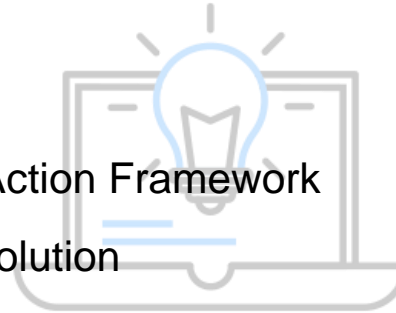


Offices in Dallas TX, London UK & Munich Germany

Diverse global 5000 customers across N. America, Europe & Asia

Worldwide support and services

Innovative

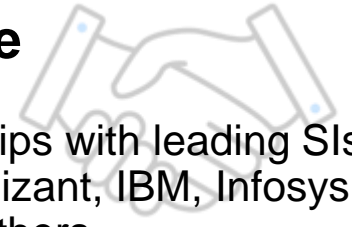


Patented Object Action Framework
100% code free solution

Thought leader in Agile adoption for packaged apps: SAP, Salesforce, Workday, Oracle, and many more

Unique approach for on-demand parallel execution of UI driven tests

Collaborative



Global partnerships with leading SIs—Accenture, Cognizant, IBM, Infosys, NTT Data and Others

Native integrations and 3rd party support for leading ALMs, Defect Mgmt. Systems, Testing Tools, CI platforms and other related solutions.

Worksoft University, training and certification programs

REDUCE TECHNOLOGY RISK

90%

automation of core business process testing for high quality

ACCELERATE IT PROJECTS

40%

faster projects, upgrades, and new implementations

IMPROVE EFFICIENCY

50,000+

hours saved annually and millions in cost savings with automation software

End-to-End Testing Defined

Application Owners / DevTest

Unit/API/Application Functional & Performance Testing

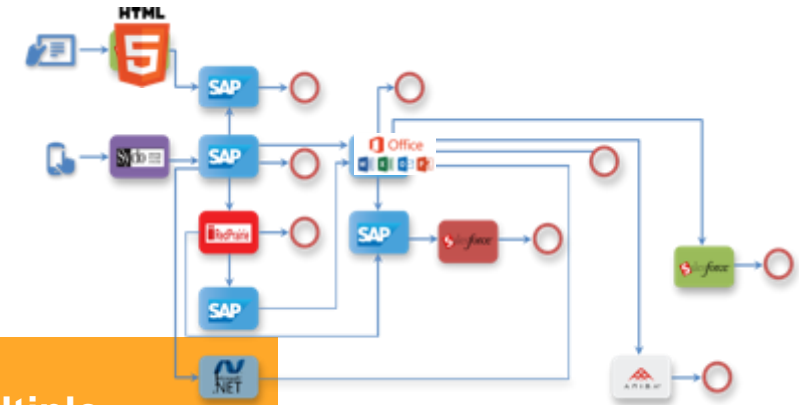
- Testing is limited to a **single** piece of code or application
- Software is tested to ensure it meets **requirements**
- Test the way a **single user** engages with the application
- Validating the **result** of each test for inputs and outputs

Pre-Prod

Business Process End-to-End Testing

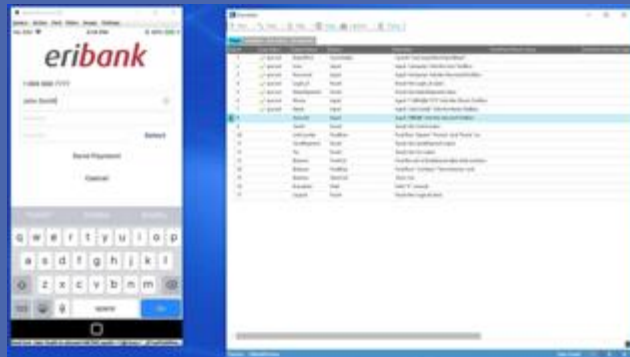
- Testing crosses **multiple** applications and user groups
- Testing ensures a **process continues to work** after a change is made
- Test the way **multiple users** work across applications
- Validate each **step** in the process is completed

Prod

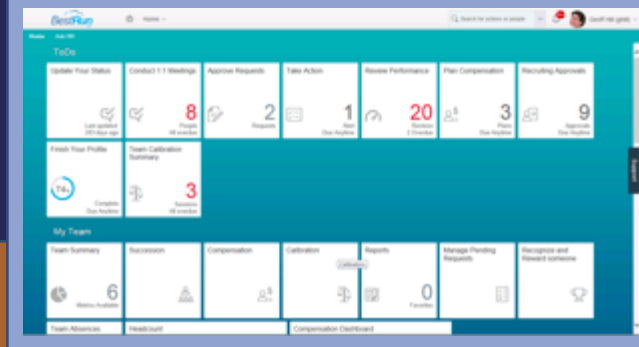


End-to-End Test: Mobile to Mainframe

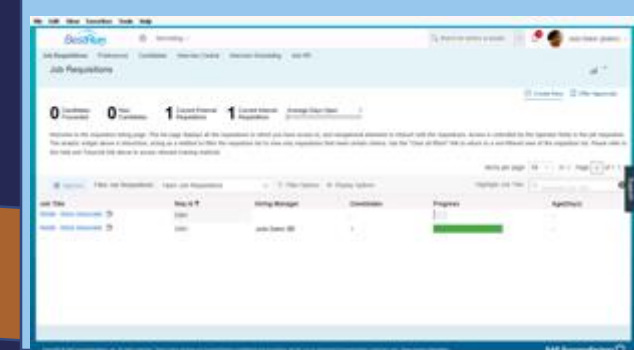
Mobile



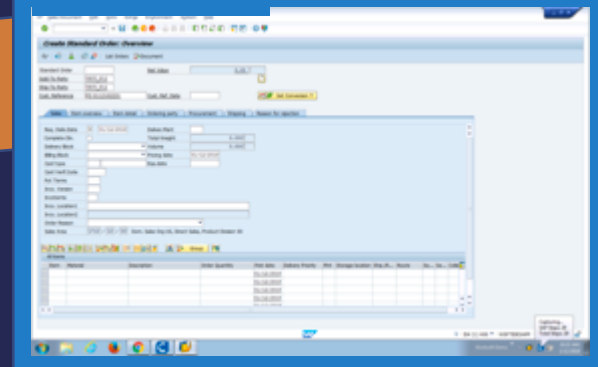
Fiori



Web



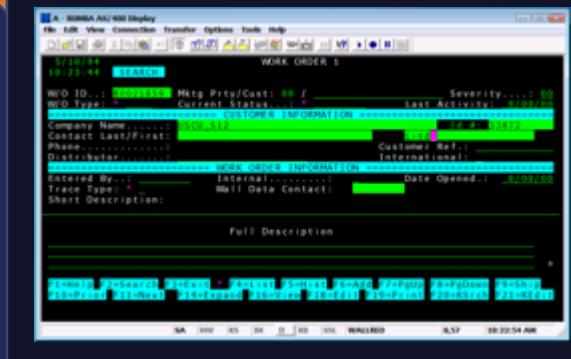
SAP GUI



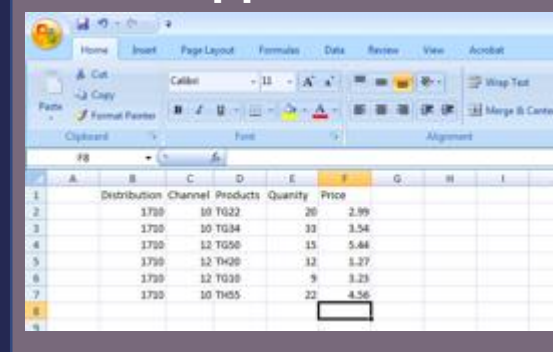
Worksoft Certify tests end-to-end mission critical business processes.

Single tests span mobile, ERP, Custom to mainframe technologies.

Mainframe



Office Applications



WORKSOFT®

Why is Enterprise App Testing SO Hard to Automate?

- Poor Documentation
- Complexity
- UI Driven
- Cross-Team Collaboration
- Impact on Upstream/Downstream Systems
- No Time
- **Multiple Testing Tools and Resources Needed**



Experitest
Intro



Experitest Snapshot

- Leading continuous testing platform provider for mobile apps, available as a SaaS or on-premise deployment

1000+
customers

All verticles:
banking, telecom,
insurance etc.



5 datacenters

- US, CA
- UK
- Germany
- Israel
- Australia
- 2 more planned



Open source support:

- Appium
- Espresso
- XCTest
- Selenium



DevOps users:

- Developers
- Testers
- DevOps
- Business



Available as SaaS or on-premise deployment

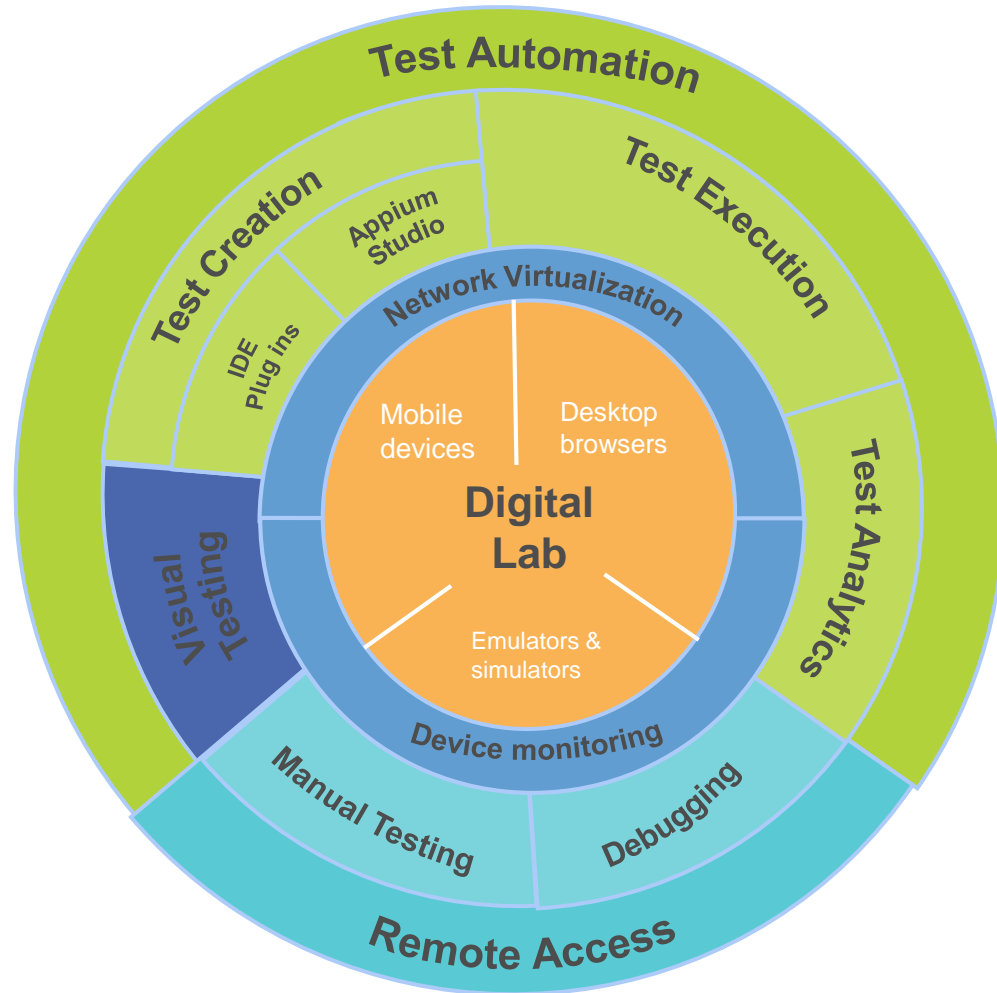


All testing types:

- Functional
- Performance
- Visual testing
- Integrations for API, Packaged apps, mainframe etc.

SeeTest Continuous Testing Platform for Web and Mobile Applications

Open to leading open source tools and other integrations



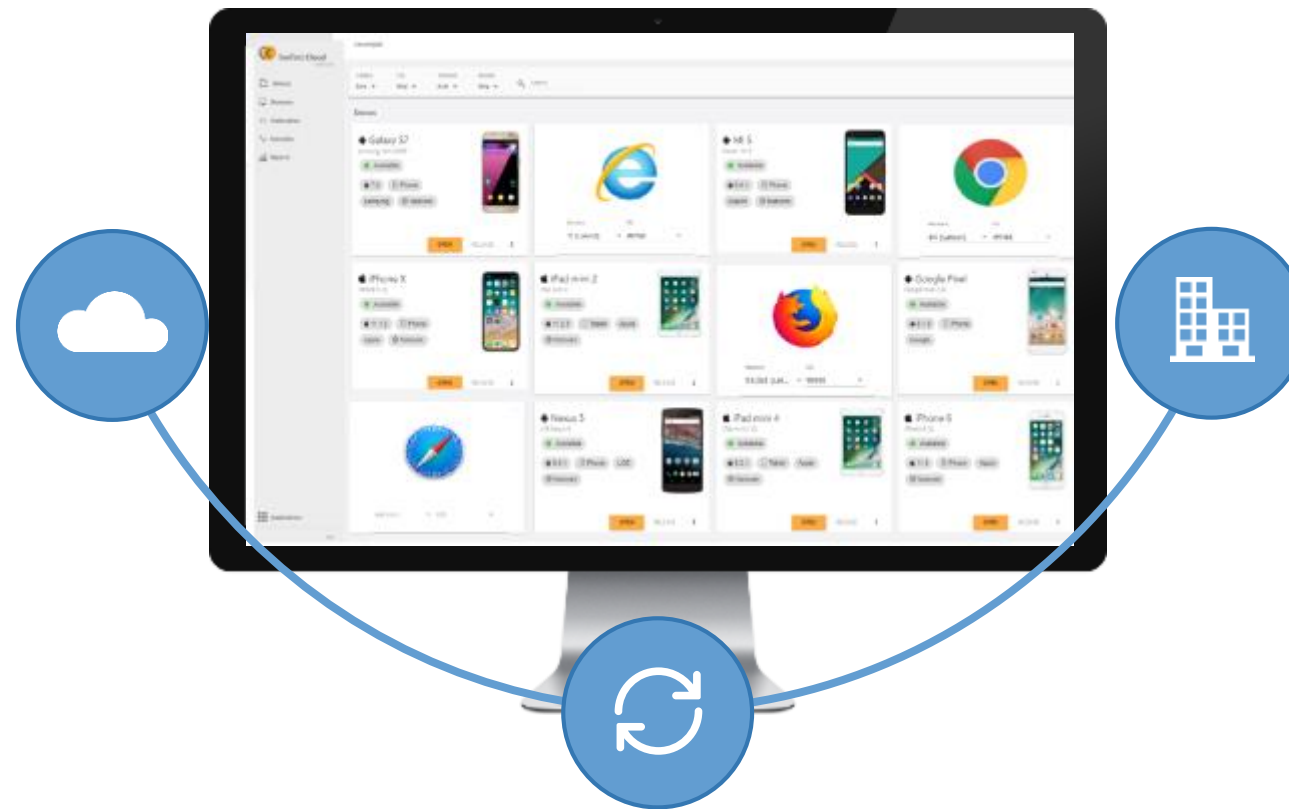
- **Servers:** Cloud server, Device Host Machines
- **Device shelves:** 20 devices per shelf
- **USB splitters**

Available On Premise or Hosted by Experitest

Remotely access a centralized hub of mobile devices (physical/emulated) to develop or test your digital apps, from anywhere

SaaS

A private lab hosted at Experitest's data centers



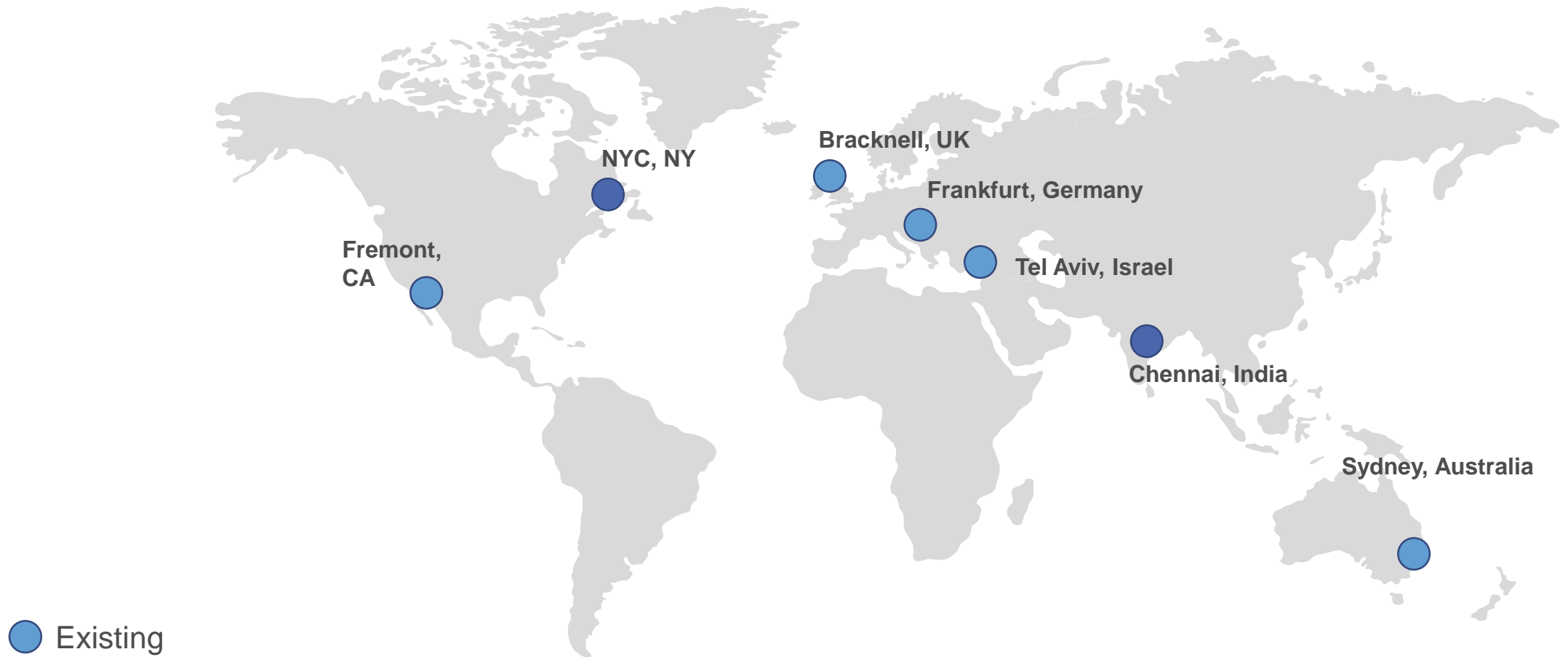
Hybrid

On-premise
Easily setup a lab on your enterprise's premises with a SW only solution.

Optional: fully deployed and managed by Experitest

Global Datacenters

Thousands of devices and desktop browsers hosted in ISO-certified data centers



- Existing
- Expected, Q4 2018

Public Facing vs. Internal Facing Mobile Applications

- Diversity of hardware
- Diversity of network
- Applications are less complex
 - User experience
 - Zero touch non trained user
 - Quality is tied to company brand
 - No control of app/devices updates and upgrades (app store)
 - Higher level of security – transmission of data on open networks
 - Store no sensitive data

Public Facing
Applications
(App Store)



- Companies have specific hardware
- Networks are less complex
- Applications are more complex
 - Density of data
 - Users trained on how to use
 - Quality is tied to operating business
 - Forced updates of applications/devices (company store)
 - Control over VPN & Networks
 - Company sensitive data is controlled and remote wipe capabilities (MDM)

Internal Facing
Applications
(Company Store)



WORKSOFT®

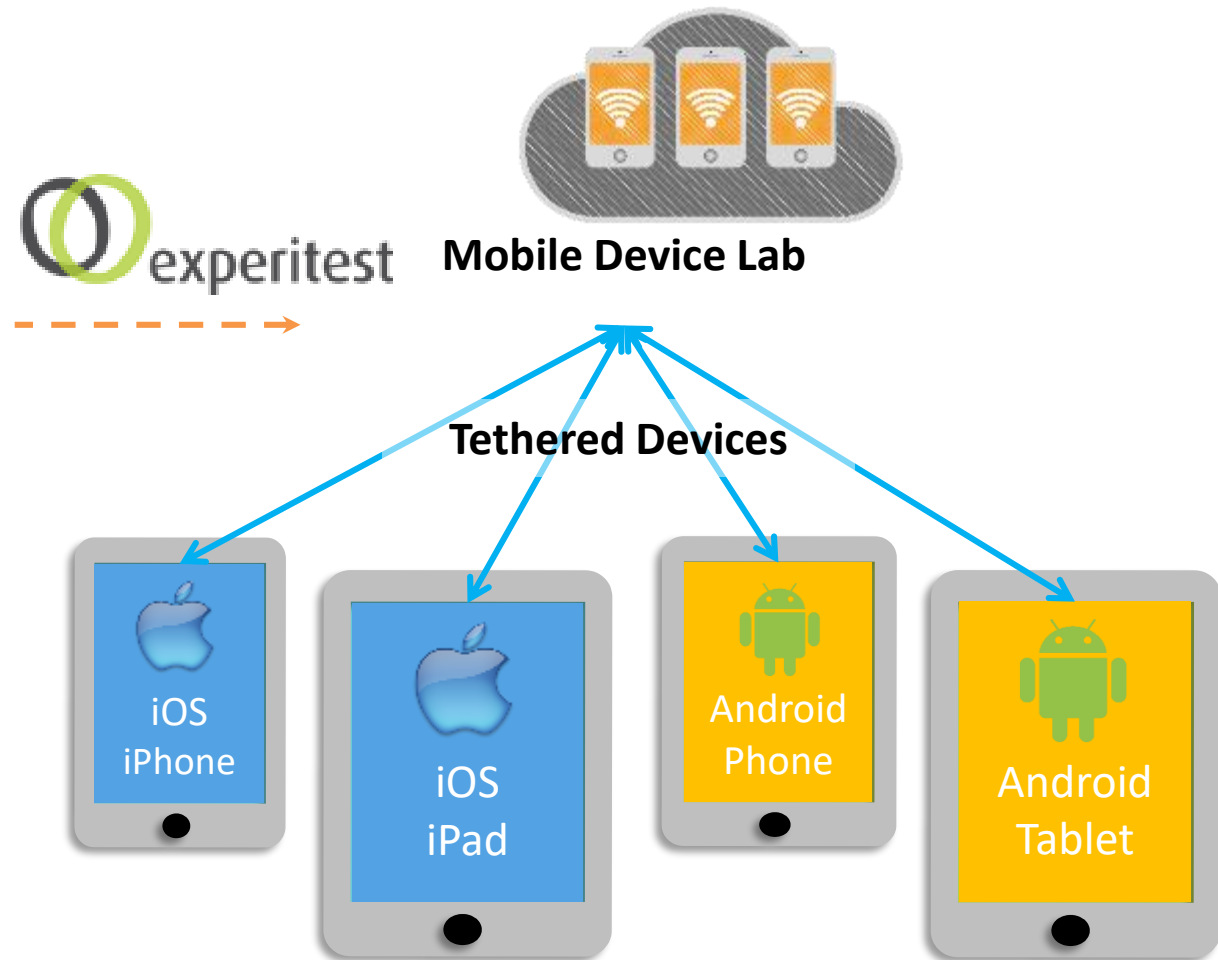
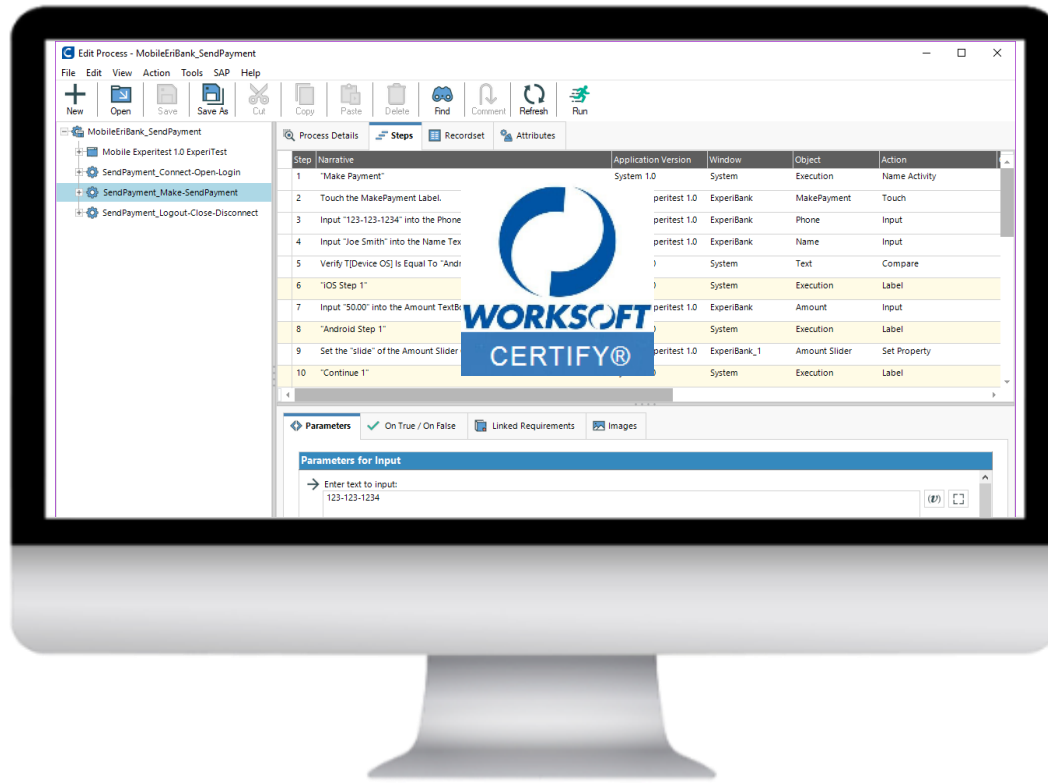


Solution Overview

Worksoft-Experitest Mobile Solution

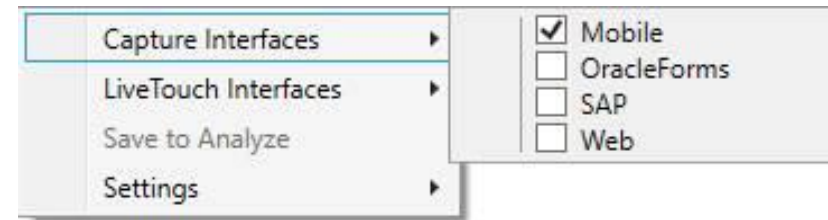
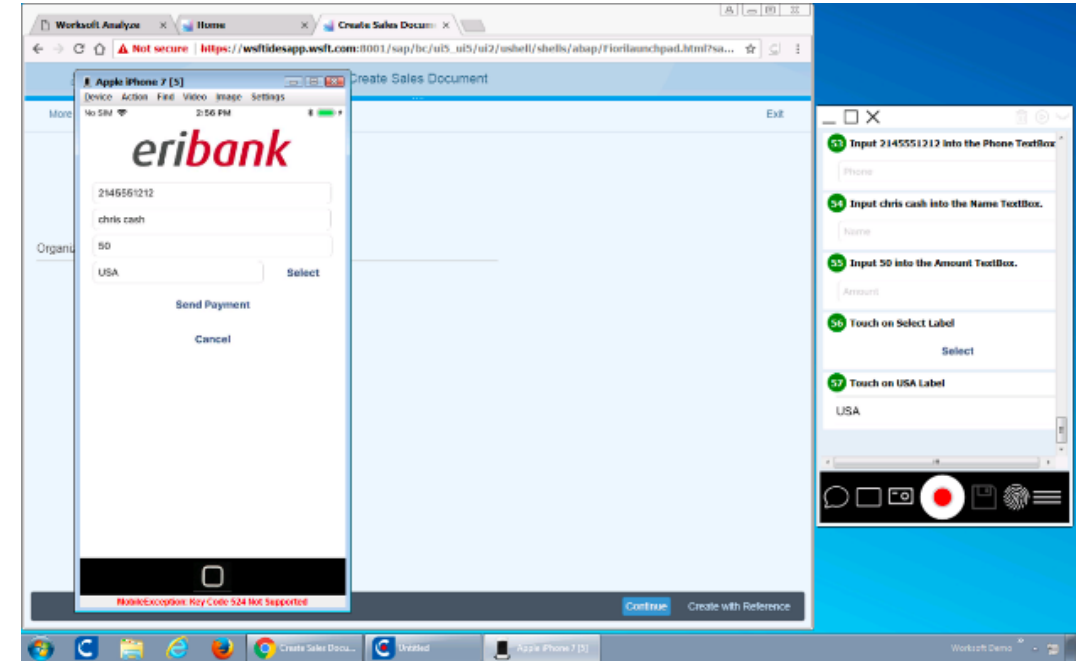
Simplicity of Code-free Worksoft Test Automation Extended to Mobile

Local, On-Premise or SaaS Cloud Hybrid Solution



Capture 2.0 Key Features

- Next generation in Capture
- Visual feedback during capture
- Ability to insert
 - Named activities
 - Comments
 - Screen
- Edit capture step – delete mistakes
- 10X speed in Chrome, Firefox, and Mobile
- Quickly document any end to end process on desktop
- Coming SOON: Auto gendoc from capture coming soon



One Test for All Platforms

Step #	Narrative
5	Verify that T[DeviceOS] Is Equal To "Android".
6	"iOS"
7	Input "50.00" into the Amount TextBox.
8	"Android"
9	Set "slide" to "50"
10	"Continue"
11	Touch the Select Lat

Edit Object

Window

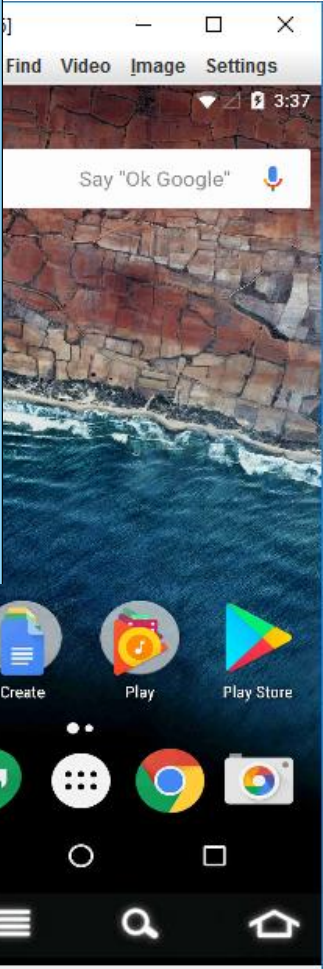
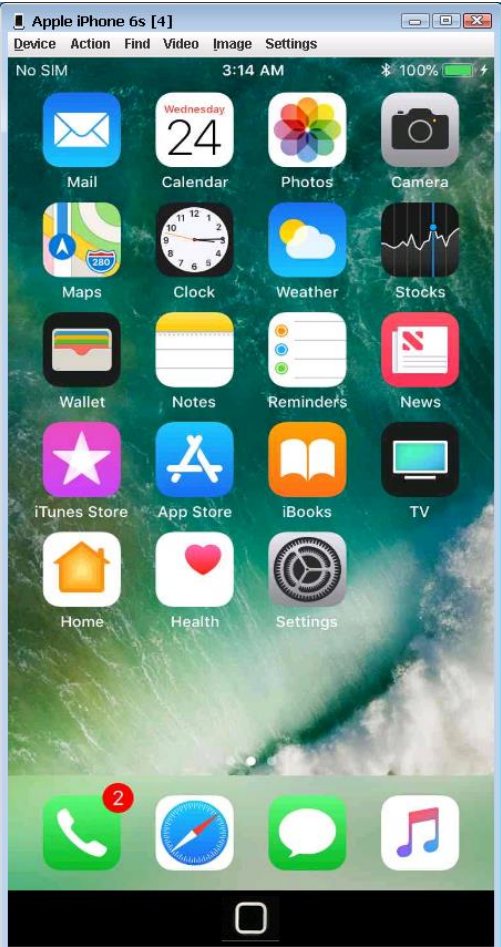
Object [IOS]

Object [ANDROID]

Name: Username

Class: TextBox

Active	Edit	Property	Instance
<input checked="" type="checkbox"/>		logicalname	
<input type="checkbox"/>		physicalname	



Shared Test Steps Across iOS & Android

WORKSOFT®



Demonstration



Benefits of Mobile Testing with Worksoft and Experitest

Easy to Use

- Author mobile application tests with Capture, LiveTouch, and Learn
- Consistent easy to use tests no matter what mobile platform is used
- Code-free test authoring using same skills as desktop testing

Easy to Maintain

- Heal tests during execution
- One test to maintain for multiple devices
- Support for browser and iOS upgrades

Easy to Integrate

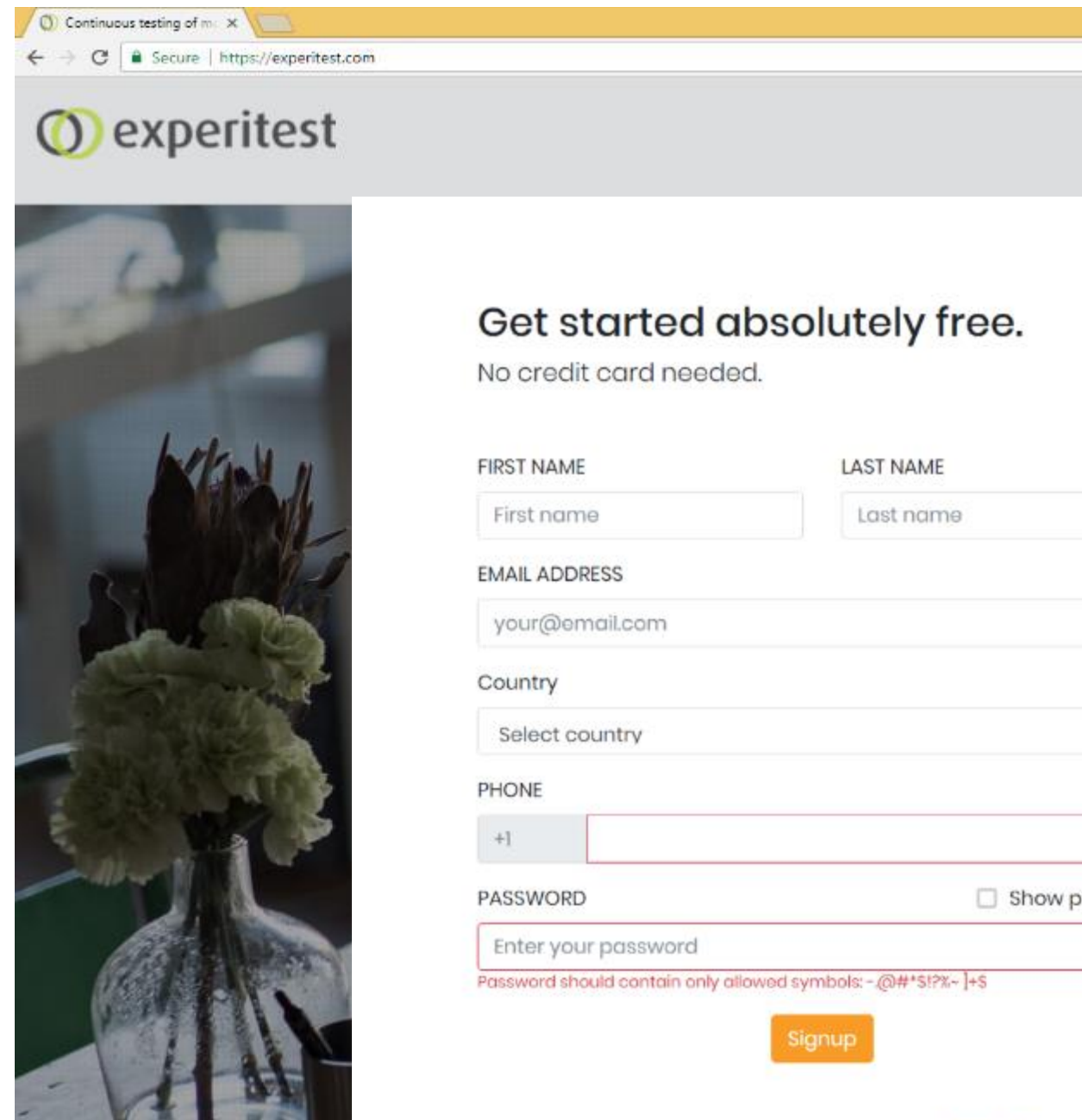
- Support cloud hosted testing solutions with Experitest
- Locally tethered device support for shared on premise device labs
- Manage mobile tests along with other tests in ALM system

Easy to Scale

- Use the same test across multiple devices
- Schedule and execute tests on multiple devices
- Run tests on physical, simulated or emulation devices

Resources

- Worksoft Capture 2.0 Mobile Demo
<https://youtu.be/rceW4iesA3c>
- Experitest Free Trial:
<https://experitest.com/free-trial>



The screenshot shows the Experitest website's sign-up page. The browser's address bar displays "https://experitest.com". The Experitest logo is at the top left. A large image of a vase with flowers is on the left side of the page. The main heading is "Get started absolutely free." followed by "No credit card needed." The form includes fields for "FIRST NAME", "LAST NAME", "EMAIL ADDRESS", "Country", "PHONE", and "PASSWORD". A "Signup" button is at the bottom right. A checkbox for "Show password" is next to the password field. A note at the bottom states: "By signing up, you confirm that you agree to our [Terms of Use](#)."

Continuous testing of m: X

Secure | https://experitest.com

experitest

Get started absolutely free.
No credit card needed.

FIRST NAME
First name

LAST NAME
Last name

EMAIL ADDRESS
your@email.com

Country
Select country

PHONE
+1

PASSWORD
Enter your password

☐ Show password

Password should contain only allowed symbols: - @#*!?!%~]+\$

Signup

By signing up, you confirm that you agree to our [Terms of Use](#).

Questions

